

School Choice Options

East Baton Rouge Parish School
System

2008-2009 School Year

August 19, 2008

Frequently Asked Questions

- What does AUS and SI mean?
- Which schools were identified?
- What options do I have as a parent?
- How do I know what the best choice is?
- I think I may be interested in the School Choice Transfer option. Now what?

AUS and SI

- AUS means an Academically Unacceptable School.
 - Schools are identified as AUS when their School Performance score is below the state minimum of 60.0
- SI means School Improvement.
 - Schools are identified for SI if one or more subgroups failed to make adequate yearly progress.

Which Schools Were Identified?

Banks Elementary
Capitol Elementary
Claiborne Elementary
Dalton Elementary
Greenville Elementary
Lanier Elementary
Park Elementary
Scotlandville Elementary
Winbourne Elementary

Which Schools Were Identified?

Capitol Middle

Crestworth Middle

Kenilworth Middle

Park Forest Middle

Broadmoor Middle

Northeast High (grades 7 & 8)

(Choice Only, not SES)



Which Schools Were Identified?

Istrouma High
Robert E. Lee High

Broadmoor High
Northeast High (Grades 9-12)
(Choice Only, not SES)

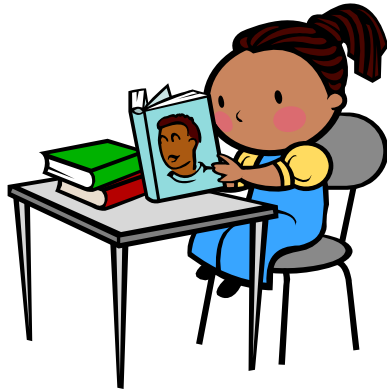


What options do I have as a parent?

- All identified schools -- **School Choice.**
- Schools in AUS 2 or SI2 or higher -- **SES**

What's the best choice for my child?

Academic Needs?



Visit Schools



Teacher Conference



SES Tutors



Options

Option 1:

School Choice Transfer

Option 2:

SES (Free Tutoring)

Note: Students at Broadmoor Middle, Broadmoor High, and Northeast High are not eligible for SES but are eligible for choice transfers.



Option 1: School Choice

- Student applies for a transfer to a school not identified as AUS or SI.
- Applications must be received by **August 29th**.
- Transfers will be offered the week of **September 8th**.

Option 2: SES (Free Tutoring)

- The student remains at the home school.
- SES (free tutoring) is available to eligible students
- Tutoring will begin in October.

If I want to apply for a choice transfer...

- See Susan Wolfe at the School Choice table after the meeting
- Applications must be received no later than Friday, August 29th.

When can I move my child?

- Transfer offers will be made the week of **September 8th**.
- You must have approval from our office to transfer your child.

Choice Reminders

- One application per child
- Your child must be currently enrolled at one of the eligible schools
- Your child's grades will follow her to the new school.



Choice Reminders

- Transportation will be provided.
- Bus Routes will be determined when you enroll your child at the new school.
- Your child may remain at the new school until she completes the highest grade at that school.

Will I get the Choice I want?

- We will do our best to honor your first choice.
- If demand exceeds capacity at a school, we will prioritize:
 1. By poverty level (Free/Reduced Lunch Status)
 2. By academic need (LEAP, iLEAP, GEE)



Important Dates

- August 29th – Last day to turn in Choice Applications
- September 8th – Choice transfer offers will be made
 1. One copy will be sent by mail
 2. One copy will be sent home with your child